

Product Data Sheet: 321101

## Shower Doc M pack - rail only (luxury rails)



### Product Detail:

- 2 x 800mm Single arm friction hinged rails
- 3 x 620mm Straight grab rails
- 1 x 480mm Straight grab rail
- 1 x 900mm Slider rail

Non-corrosive stainless steel grab rails with concealed fixings

Complies with Doc M of the Building Regulations

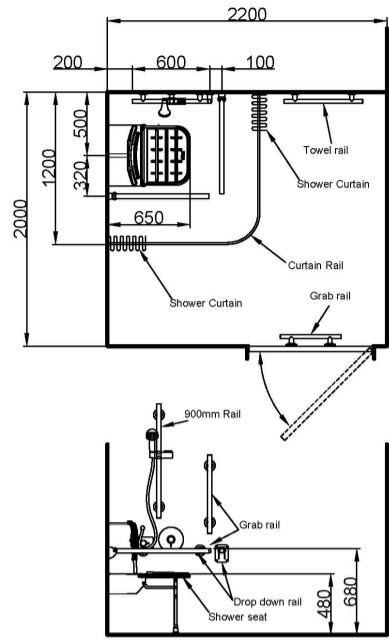
WRAS approved

Reference (specify): 321101

Available colours/finishes

SP

SS



Above is for guidance only, refer to relevant building regulations (Nymas rail and shower seat only pack, shower components not supplied. See data sheet for pack components).

| Order Code    | Size (A) |
|---------------|----------|
| <b>321101</b> |          |

PLEASE NOTE: Every effort has been made to ensure as much accuracy as possible. However, due to print restrictions exact colour match is not always possible. Featured products may also be changed from time to time, but are correct at time of publication.

\* Terms and Conditions apply - [www.nymas.co.uk/warranties](http://www.nymas.co.uk/warranties)