

Doc M Shower Pack - concealed valve with seat and stainless steel grab rails



Product Detail:

This Doc M pack is designed to provide additional support for the user. The pack is compliant with the Approved Document M of the Building Regulations 2000, is WRAS and LABC approved.

The pack contents include:

- 1 x TMV3 thermostatic sequential shower kit
- 2 x 800mm Single arm friction hinged rails
- 3 x 620mm Straight grab rails
- 1 x 480mm Straight grab rail
- 1 x Slifer bracket
- 1 x 1200mm x 1200mm Shower rail
- 2 x 1800mm x 2000mm Weighted shower curtains
- 1 x Robe hook
- 1 x Doc M shower seat with legs

Features include:

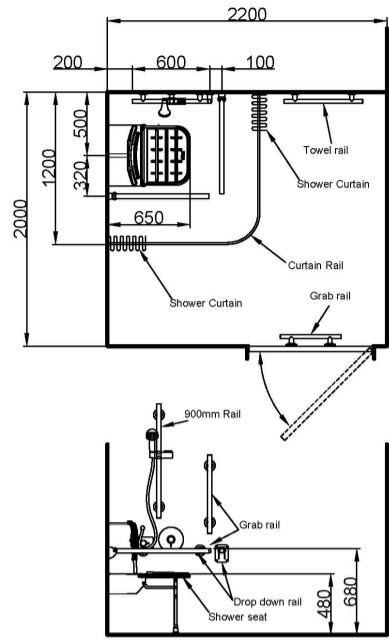
- TMV3 thermostatic mixer shower with extended lever
- Non-corrosive stainless steel grab rails with concealed fixings
- Complies with Doc M of the Building Regulations
- WRAS approved

Reference (specify): 321103

Available colours/finishes

SP

SS



Above is for guidance only, refer to relevant building regulations (Nymas rail and shower seat only pack, shower components not supplied. See data sheet for pack components).

Order Code	Size (A)
321103	

PLEASE NOTE: Every effort has been made to ensure as much accuracy as possible. However, due to print restrictions exact colour match is not always possible. Featured products may also be changed from time to time, but are correct at time of publication.

* Terms and Conditions apply - www.nymas.co.uk/warranties